

# OUR CORPORATE SOCIAL RESPONSIBILITY





# CORPORATE SOCIAL RESPONSIBILITY

At Delancey, we have a passion for property. It is an enthusiasm that goes beyond the recognition that real estate can be an effective investment vehicle; we are also conscious that property development has a huge impact on society.

We all live, work, shop and relax in the buildings that the real estate profession plans, designs and constructs. We have a responsibility to ensure that the developments make a positive contribution so that all of our stakeholders benefit – be it tenants, consumers, partners, investors or the wider community.

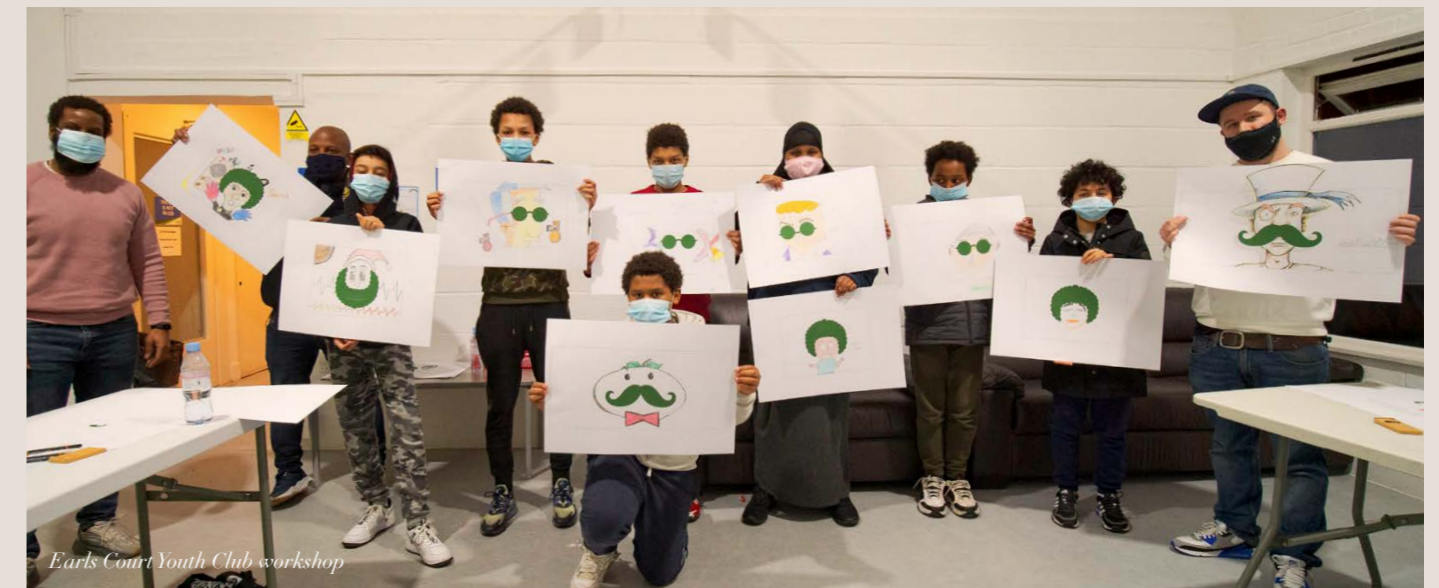
We look to participate in projects which enable us to positively contribute, whether through schemes operating within the locality of the portfolio assets or that are related to the industry in which Delancey operates. We take pride in the planning, design and construction of each development and understand the responsibility we have to all of its stakeholders including tenants, consumers, partners, investors and the wider community.

We are a part of a robust and comprehensive Responsible Investment framework. More information on our approach to corporate responsibility can be found by visiting our website pages: Responsible Investment, Corporate Social Responsibility). Delancey and its platform businesses are fully committed to supporting a range of placemaking and philanthropic activities that we use to engage with local communities further. We do this by continuously seeking numerous ways to make much needed financial and in-kind contributions to the community and support numerous charities and deserving causes in the world of art, culture, education and health, as well as in more recent times providing vital support during COVID-19. These include amongst others: Dads House, a charity that provides support services and foodbanks for those who are in need; East End Community Foundation, a charity dedicated to increasing opportunities for people living in the East End; The National Portrait Gallery's Schools and Hospitals Programmes across London; Snow Camp youth charity; Young Minds; The Globe Theatre; and the UK's largest children's chess competition, the Delancey UK Schools Chess Challenge. For a wider list of who Delancey has supported to date, you will find this at the back of this document. Separate from this brochure, we report on our Responsible Investment activities directly to investors and are working on our first formal Sustainability Report.

Delancey has always valued and been aware of a building's surroundings and, whether directly or indirectly, sought to be involved beyond the doorstep.

The Delancey team has been involved in creating and managing a number of places that people want to be in and has an absolute, over-arching commitment to:

- Investment into the built environment
- Working with occupiers, residents and businesses, to form and sustain a strong and vibrant community
- Being innovative in tailoring what we do to the changing needs within the community as the neighbourhood develops over time.





CASE STUDY ONE

GET LIVING

GROWING AND STRENGTHENING OUR COMMUNITIES

*NEIGHBOURHOODS  
ANCHORED IN  
THEIR LOCALITY  
AND SENSITIVE  
TO THE LOCAL  
ENVIRONMENT  
ARE MORE VIBRANT  
PLACES TO LIVE*



Mirabelle Gardens, East Village, East London



GET LIVING

In 2013 Delancey launched build-to-rent platform business, Get Living, determined to change renting for the better. Get Living's first and flagship neighbourhood, East Village, led the legacy of the London 2012 Games transforming the former London 2012 Athletes' Village into a vibrant community of more than 6,500 residents and over 30 independent retailers. Get Living today is backed by purpose-driven investors DOOR, APG and Aware Super, and operates three neighbourhoods - East Village London (E20), Elephant Central London (SE1) and New Maker Yards at Middlewood Locks, Manchester - with plans to grow by a further 6,500 homes across the UK.

Get Living recognises that neighbourhoods anchored in their locality and sensitive to the local environment are more vibrant places to live and where people choose to live for longer. This has been clearly demonstrated during lockdown, when we were all restricted to spending time in our homes and immediate local neighbourhoods, and when local green spaces became even more precious.

Get Living is not just changing renting for the better; its neighbourhoods create wider social, environmental and economic benefits - also known as social value - for local and surrounding communities.

Social value creation then grows through the lifetime of a neighbourhood, as relationships are built and partnerships are forged. Get Living is backed by long-term investors who share its values and who want to see its neighbourhoods continue to grow and thrive.

This commitment means Get Living creates strong partnerships with impactful local organisations. Since its launch in 2013, Get Living has supported a range of community causes and organisations across its neighbourhoods.



LOANHOOD pop-up at The Lab



Soboye fashion and lifestyle

The Lab at East Village

E20 FOOTBALL FOUNDATION

E20 Football Foundation is a programme supported by Get Living and Triathlon Homes, offering East Village and Chobham Manor residents free football training and tournaments.

When outdoor sport was disrupted by Covid, the team launched an impressive programme of online activities to keep local families active during lockdown - reaching more than 1,800 people.

Over the summer holidays they delivered a six-week summer sports programme in accordance with the sport governing body's COVID-19 safe guidance. The team saw how through structured sports sessions, coaching and mentoring, East Village young people developed respect for themselves and others.



E20 Football Foundation football players



E20 Football training in action

EAST VILLAGE MENTORING PROGRAMME

Since spring 2020, the East Village community team has been working with Chobham Academy Secondary School and XLP, a charity focused on empowering young Londoners, to support a group of young people that live in East Village that were considered vulnerable.

As a team, they have been speaking regularly to their families and the young people over the phone to check how they are coping. Get Living donated several arts and crafts packs, which have been used as prizes for challenges.

The team has seen how a positive relationship can restore a young person's trust in people. The team is now planning to develop the mentoring program with further support from XLP and the E20 Football Foundation.



Fun and games at East Village



Chobham Academy mentoring



ROSETTA ARTS CENTRE

In June 2020, five local Newham resident artists were selected to join the first Rosetta Artist Accelerator scheme. The scheme, supported by Get Living and the Foundation for Future London, provides a bursary, studio space, and mentoring to accelerate the careers of local artists.

An opportunity provided by the programme involved these artists delivering a series of community consultations to shape the Mayor of London's Covid-19 memorial honouring key workers and Londoners who have lost their lives. In 2021, 33 trees – one for each London borough – will be planted close to East Village in Queen Elizabeth Olympic Park.

The first year of the programme came to an end in summer 2021, with an exhibition of works in East Village.



Polaroids from Rosetta Arts Centre



Get Living supports Mind in Salford



The 'Mindful Christmas Tree' at New Maker Yards, Manchester

MIND IN SALFORD'S MINDFULNESS PROJECT

Get Living teamed up with charity partner Mind in Salford to create a 'Mindful Christmas Tree' at New Maker Yards to help make a positive difference to the mental health of the people of Salford during the festive season.

More than 300 messages within baubles including self-care reminders and information about Mind's support services, helped uplift spirits for those who may be struggling with feelings of anxiety and loneliness at Christmas.

Mind in Salford became a Get Living charity partner after New Maker Yards residents were asked which local charity they would like to see the team support. Since then, £5,000 was donated to Mind in Salford.

SUPPORTING LOCAL FOODBANKS IN LONDON AND MANCHESTER

In addition to the £6,500 donated to foodbanks in the first weeks of lockdown, Get Living extended that support in the run up to Christmas, this time actively engaging residents to encourage further donations.

Across all three neighbourhoods 1,150 Christmas gift bags were delivered printed with the message: "Baby it's cold outside. Stay home". Inside Get Living included a £5 donation on behalf of the resident to the local foodbank, donating a total of £5,425 to those most in need.



Get Living Christmas care packages

bear\_he\_goes Thanks for the care package @newmakeryards and @simplygetliving!! I'm still too young...



## CASE STUDY TWO

### ELEPHANT AND CASTLE TOWN CENTRE

DELANCEY'S APPROACH TO SUPPORTING AND INTEGRATING INTO THE LOCAL COMMUNITY

# *BRINGING TOGETHER A COMMUNITY*



*The Elephant and Castle Community Hub opening party in 2019*



## ELEPHANT AND CASTLE TOWN CENTRE

The Elephant and Castle Town Centre redevelopment in Southwark incorporates the now closed 1960s covered shopping centre. From the outset, Delancey sought to establish the centre as a major contributor to the life of the local community. To do this a number of initiatives have been carried out to support the local neighbourhood, and Delancey has continued to support community groups and projects as the appointed development manager for the scheme, alongside the operational platform business Get Living.

Some of these include:



Positive ageing social club

Our social value appraisal for the Elephant and Castle Town Centre project:

£200m+ investment in locality to date	£1bn future investment planned
1 physical community hub was initially created, which has now evolved into an online hub and pop-up spaces providing sports, social and wellness activities	The 2023 Careers Fair offered over 100 attendees the opportunity to meet with 23 exhibitors
£400k+ in sponsorship and charitable donations	The online community hub has had over 54,400 views to date
<b>ELEPHANT + CASTLE</b> TOWN CENTRE	

## ELEPHANT AND CASTLE COMMUNITY FUND

The Inspiring Elephant Community Fund provides grants to local groups to support both short term projects and longer-term initiatives in the community. Twelve successful applicants received grants of between £2,500 – £4,950 helping to support various local organisations that contribute to the thriving and vibrant community. This aims to help fight inequality and benefit disability groups, senior citizens, and members of the BAME community.

The successful applicants received grants of between £2,500 – £4,950. **Total £50,000**

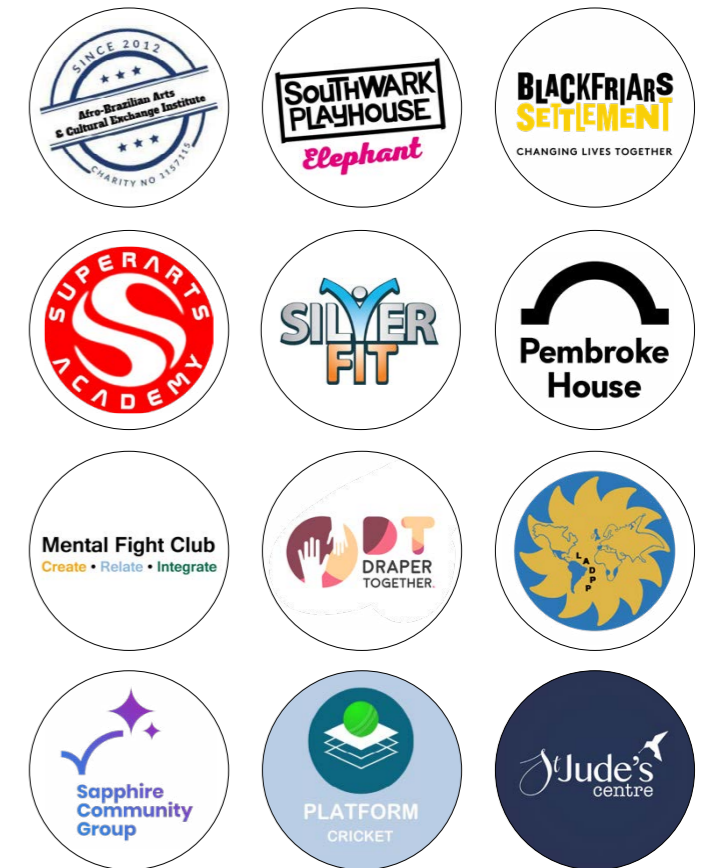
Get Living at Elephant and Castle Town Centre has contributed £25,000 to the Elephant Community Fund in 2022 and 2023. This additional support, alongside the contributions from Southwark Council and Lendlease, has greatly aided in furthering local initiatives.

Winner: Bizzie Bodies

*"It is incredible. It's just a reward for everything that we've been doing and to find out that actually what we're doing is very good". Founder Emilie Mendy*



The full list of the 2022 year's successful applicants includes:



Community Fundraisers



Fundraising event



ELEPHANT AND CASTLE COMMUNITY HUB

Established in 2019, the hub successfully transitioned activities to a hybrid platform during the Covid-19 pandemic, ensuring accessibility for the community. The virtual hub has welcomed over 20,000 visitors, with 53,500 views from individuals benefiting from 12 free online and in-person activities across various venues in Elephant and Castle. In-person activities include baby music concerts, Latin dance aerobics, street dance sessions for kids and teens, Community Choir, and arts & crafts workshops for adults. Online activities include meditation, chair yoga, and yoga in partnership with the Disability Sports Coach charity.



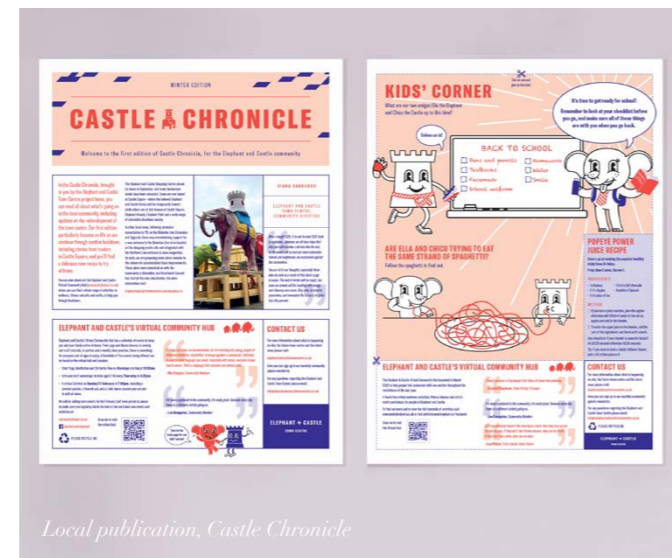
Community Hub Latin dance aerobics



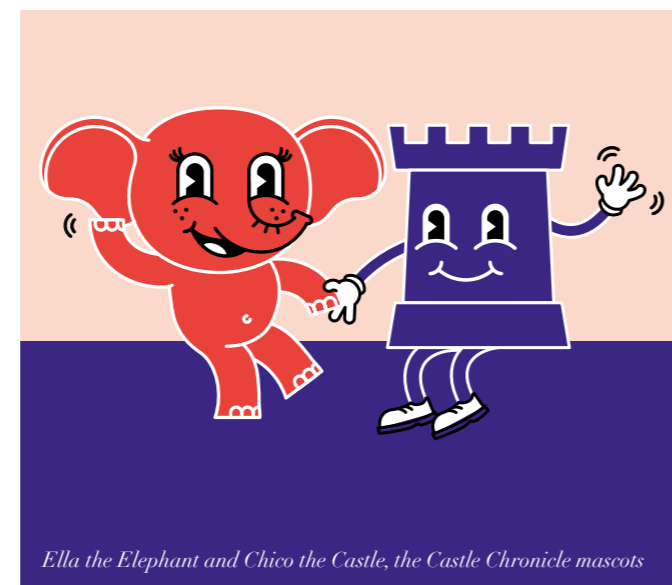
Arts & crafts workshop

COMMUNITY MAGAZINE, CASTLE CHRONICLE

The Castle Chronicle is a local newspaper that launched in January 2021. Inside, the local community of Elephant and Castle can read all about what's going on in the area including updates on the redevelopment of the town centre. It also provides advertising space free of charge to a range of local traders and businesses. Past editions include stories from traders in Castle Square, delicious new recipes to try at home and advertising space for local businesses. The Castle Chronicle is delivered to the full Elephant and Castle Opportunity Area of circa 15,000 homes on a quarterly basis.



Local publication, Castle Chronicle



Ella the Elephant and Chico the Castle, the Castle Chronicle mascots

COMMUNITY-LED EVENTS IN CASTLE SQUARE

Regular events celebrate international occasions, inviting participation from locals and the wider area. These events aim to bring footfall to support local independent traders and create job opportunities for local talent. Recent examples include the Fiesta Latina Procession, the Coronation weekend, the Bunny Hop Easter event, and the Elefit community wellness event.



Elfit at Castle Square



Fiesta Latina Procession

CAREERS FAIR IN CASTLE SQUARE

In June 2023, the Elephant and Castle Town Centre Team hosted a careers fair in Castle Square for a four-hour exhibition aimed at empowering local residents to explore fulfilling career opportunities. The event, promoted through local schools, the council's communication channels, and the regional press such as Southwark News, attracted a turnout of over 100 enthusiastic attendees meeting 23 exhibitors. Attendees were treated to a range of activities, including CV workshops, and speeches delivered by civic leaders, including the Mayor of Southwark and local ward councillors Martin Seaton and Naima Ali.



Careers Fair at Castle Square



Careers Fair at Castle Square



WORKSHOPS AND EMPLOYMENT

Since Keltbray, the construction engineering specialist group, started on site in October 2020 they have continued to seek out opportunities to engage with the local community.

As part of Keltbray's ongoing commitment to sustainability, in March 2020 Keltbray teamed up with Construction Youth Trust to deliver a school engagement. The main question raised to the Year 9 students at from Notre Dame School was 'What is sustainability and how do the choices we make affect the environment?' Milena, Keltbray's Group Environmental Advisor on the Elephant and Castle Project, was on hand to explain how the construction industry must balance time, cost and environmental impact when it comes to creating buildings. This opportunity allowed students to step into the shoes of a designer and decide which materials would be used to construct a new school.

A student from the group commented on why they enjoyed the session:

*"We were able to learn what subjects we need to study to get the job, and we now understand how we can work to keep the environment as clean as possible for future generations"*

As part of the development of Elephant & Castle Town Centre, we are committed to providing employment and apprenticeship opportunities for local people. In early 2021, Keltbray, our demolition contractor employed local resident Ewart as a Trainee Asbestos Operative for the project in Elephant & Castle. He has settled in well with the site team and will continue his career development within the Keltbray Group. There are more job opportunities on site and we are continuing to encourage local people to find out more.



Keltbray Apprentice Ewart working on site

SOUTHWARK BUSINESS AWARDS

We sponsored the Contribution to the Community category of the Southwark Business Awards in 2022. This category recognised businesses with a great approach to corporate social responsibility that can demonstrate they make a real tangible difference in their community.

These initiatives aim to engage the community, support local businesses, and foster economic growth while providing opportunities for personal and professional development. Together, we are making a positive impact on Elephant and Castle.



Gatsby Gala



Southwark Business Awards 2022

EMPOWERING LOCAL GROUPS

The Inspiring Elephant Community Fund supported 12 local community groups last year with £50,000 in annual funding. Over the next four years, the Elephant and Castle Town Centre team will distribute £200,000 to the local community. Local organizations can apply for multi-year grants of up to £5,000. Applications are reviewed by community leaders, including members of the Southwark Council, Get Living, and Community Hub members. Additionally, Get Living has partnered with Lendlease and Southwark Council to contribute £25,000 each year since 2022 for further support to local initiatives.



Local dance group at the Community Hub

ELEPHANT & CASTLE BUSINESS FORUM

Created as a collective voice for businesses, the forum facilitates collaboration between businesses and stakeholders. Its aim is to attract funding, assist in the economic regeneration of the area, and ensure inclusivity for new and existing businesses and the community. A feasibility study for a Business Improvement District (BID) is currently in progress.



Visual Identity Project with LCC students and local businesses

COVID-19 SUPPORT

In April 2020 Delancey provided the charity 'Dads House' with a free unit as well as food, in the Elephant and Castle shopping centre to run their foodbank and support from. The foodbank operated on Tuesdays and Fridays, they had 10 volunteers, plus 5 drivers including a foodbank coordinator for the area.

In July 2020, Founder of Dads House, Billy McGranaghan contacted Delancey to say:

*"I wanted to say a huge thank you to every single person who works for Delancey, for all the support we have been given from day one. And also every single person should be so proud that we have all been involved in Covid-19 together, because if it was not for you guys supporting us, so many families would have been lost."*

To date, the charity has served an estimated 100,000 meals during the Covid-19 Pandemic. Since the Elephant and Castle Shopping Centre closed in September 2020 Dad's House have focused their efforts on their foodbank in Earls Court.



Billy McGranaghan and Luke Tydemán, Founder and Foodbank coordinator, outside Dads House



CASE STUDY THREE

EARLS COURT DEVELOPMENT COMPANY

---

THE APPROACH TO ECDC'S CRS FUNDING IS BASED ON INVESTING IN AND HELPING TO DELIVER SOCIAL VALUE TO THE LOCAL COMMUNITY

*INVESTING IN THE FOUNDATIONS OF A COMMUNITY*





## EARLS COURT DEVELOPMENT COMPANY

The Earls Court Development Company is the Earls Court-based business responsible for driving forward the development of the Earls Court site. It operates on behalf of Earls Court Partnership Limited, a joint venture between Delancey and Transport for London (TfL). Since acquiring the site in 2019 The Earls Court Development Company (ECDC) has supported a number of charities and organisations based in the local area, in both Hammersmith and Fulham and the Royal Borough of Kensington and Chelsea.

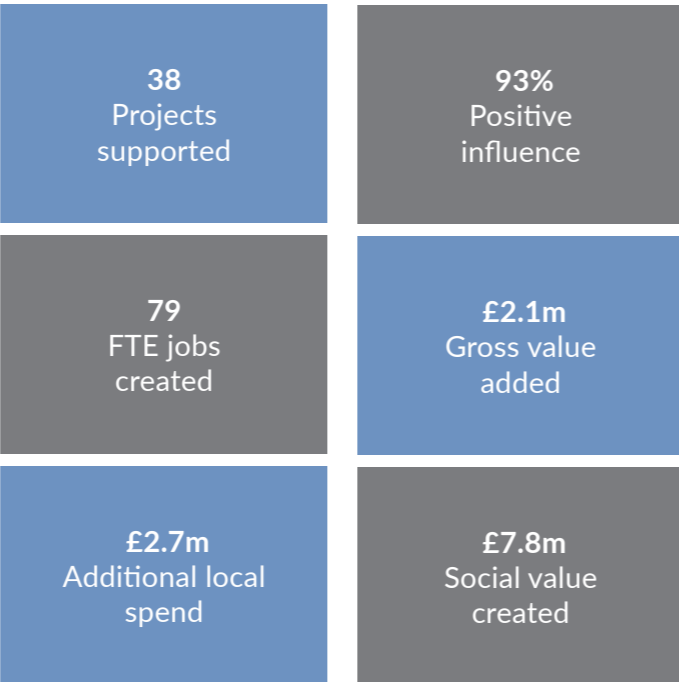
ECDC came into being during a global pandemic which shone a light on the way in which we live and work, as well as how our local environment can influence and shape opportunities; this has shaped the way in which we operate. Being a local business is hugely important to ECDC, it enables them to meet and work with local communities on a daily basis and see first-hand the amazing work which is being done across LBHF and RBKC, as well as the challenges that organisations and individuals face to deliver services and access opportunities.

The approach to ECDC's CSR funding is based on investing in and helping to deliver social value to the local community, when seeking new sponsorship opportunities they ensure they align with the company's principles of Environment and Sustainability, Communities and People and Arts, Sports and Culture. An extension of support to inherited charities from the previous owner of the site was also provided, up until the launch of ECDC's very own community fund in summer 2021.

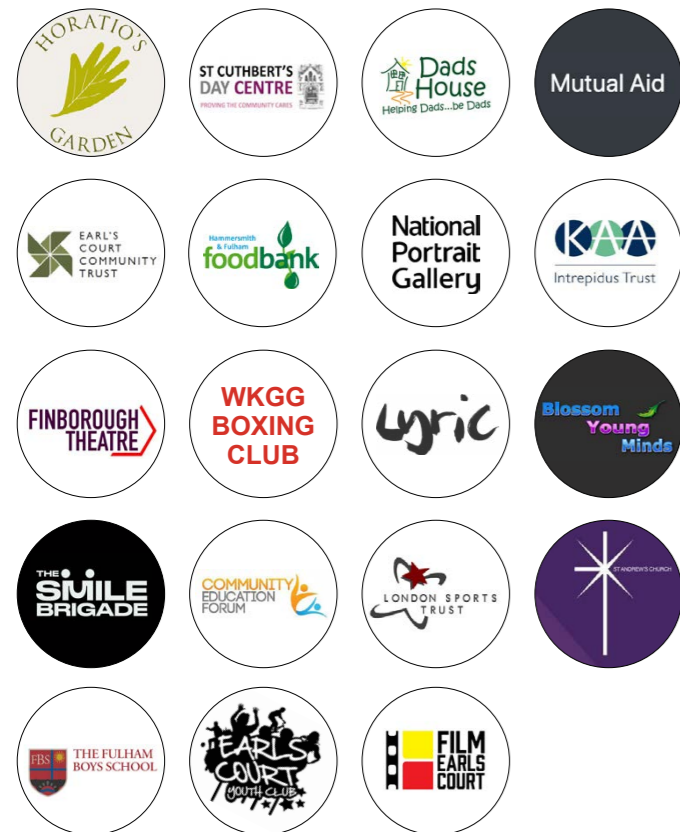
Since January 2021 The Earls Court Development Company has provided over £796,000 of support to the local communities in Hammersmith and Fulham and the Royal Borough of Kensington and Chelsea.

### The impact of ECDC

Between November 2021 and November 2022, our activities have helped achieve an estimated:

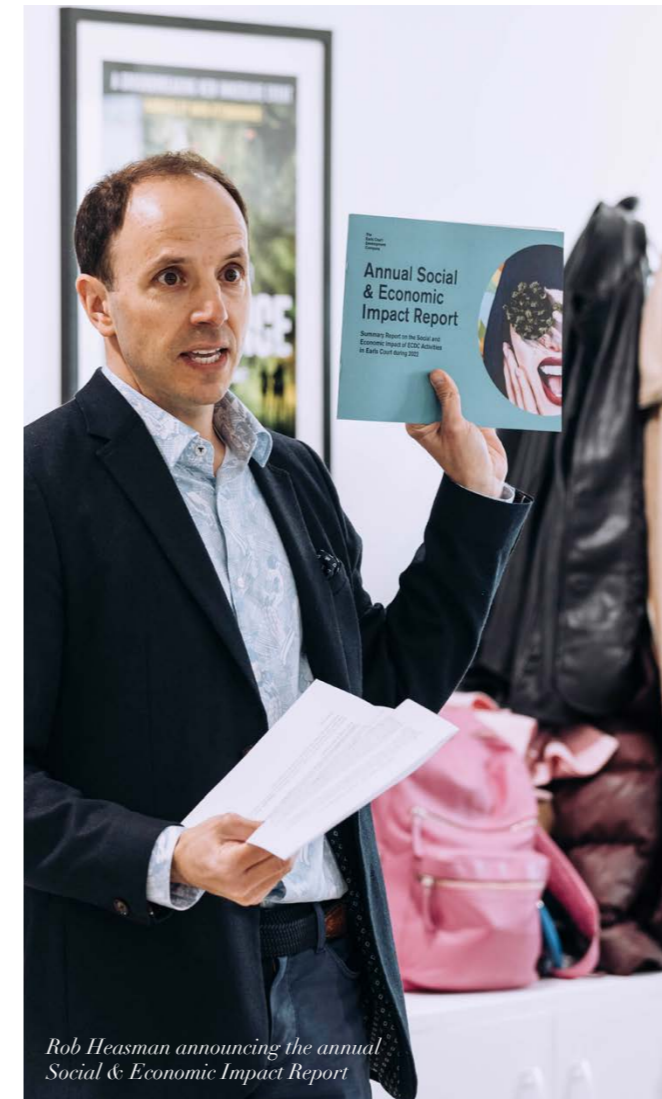


% of local residents surveyed who responded positively when asked how ECDC have influenced their feelings towards the area



## COMMUNITY FUND

The Earls Court Community Fund was set up in 2021 to support the development of local projects that deliver community activities and support residents to engage with their neighbours and build community connections around the Earls Court site and surrounding areas of Hammersmith & Fulham and Kensington & Chelsea. The £180,000 Fund provided each project with a grant of up to £15,000. In 2021/22, the Fund supported 18 projects to deliver community activities over a 12-month period.





COMMUNITY HUB

The Earls Court Community Hub opened in July 2022, and since then it has been providing fun educational and community-focussed activities which are open to everyone. The Hub acts as a place where people can come into the Earls Court site and build connections, both with the place and with each other. It is also located in a place where local people can develop a sense of social ownership. In the future the Hub will be utilised to facilitate engagement on the design and the masterplan of the development.

ECONOMIC IMPACT

The Community Hub is an investment in community development, providing access to support and services that improve the lives of local residents. The positive economic impact is caused by money spent in the local economy to refurbish and supply the facility, and new jobs associated with the operation of the Hub.



*Celebrating the Community Hub's 1st birthday*



*Community Hub's 1st birthday event*



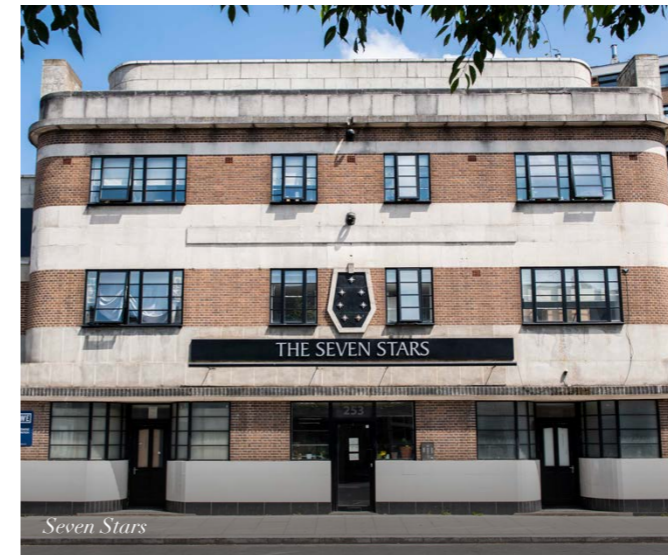
*Free Artist in Residence art workshop held at the Community Hub*

EMPRESS PLACE / SEVEN STARS

Owned by ECDC, Empress Place West and Seven Stars are two sites let to the Lowe Group and refurbished in 2021, and brought onto the market through a Property Guardianship scheme. The Lowe Group prioritise people working in key sectors offering low-cost accommodation when they would otherwise have to live further afield. Empress Place East has been let to This is Projekt and refurbished in 2022, and brought onto the market as affordable creative workspace. 46 studios are fully occupied with artists, designers, stylists, cermaicists and more.

THE SKILLS CENTRE

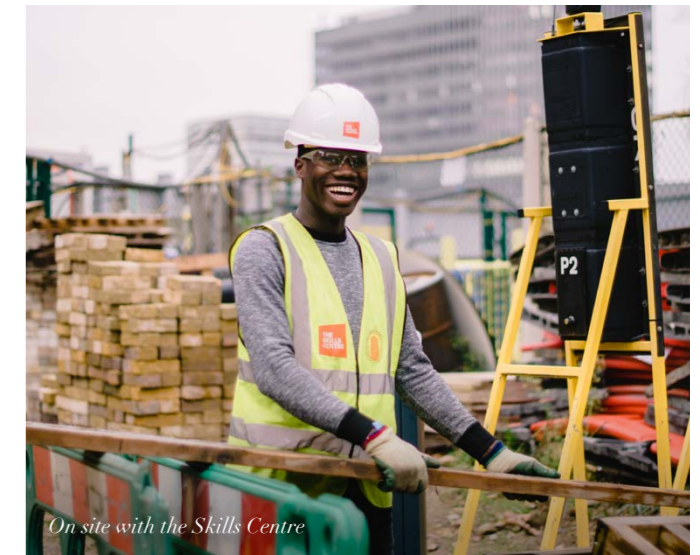
We are working with TfL to support a Skills Centre on our development site. The Skills Centre offers training and qualifications to access the construction industry sector. By working directly with developers and constructors, students gain an understanding of what it is like to be on a real-life development site. Attendees get a clear pathway to employment upon completing their courses. The Centre also provides an education programme where built environment professionals can go into schools to teach about STEM and development-related career paths.



*Seven Stars*



*Empress Place*



*On site with the Skills Centre*



*The Skills Centre offers training and qualifications to access the construction industry sector*



CASE STUDY FOUR

HERE EAST

COMMITMENT TO THE OLYMPIC LEGACY, SUSTAINABILITY AND SOCIAL IMPACT

*STANDOUT  
EXAMPLE OF  
RETROFIT AND  
SUSTAINABILITY  
IN THE BUILT  
ENVIRONMENT*

HERE EAST

Located in Queen Elizabeth Olympic Park, Here East is a 1.2 million sq ft tech and innovation campus, developed by Delancey and owned on behalf of its clients. A catalyst for growth, it is home to over 6,000 academics and innovators, and is designed to foster collaboration, allowing its community to innovate, scale and grow at pace. Tenants include Plexal (Here East's dedicated innovation centre), Fiit, Ford Drive, Studio Wayne McGregor, Matchesfashion, and The Trampery on the Gantry, which provides 21 studios for local artists and designers. There is a significant education presence with Loughborough University London, UCL, Staffordshire University London, LMA and Teesside University London.

Once the Press and Broadcast Centre for the 2012 Olympic Games, Here East is committed to continuing the Olympic legacy in London and ensuring that all Londoners feel the benefits of the campus, offering a wide variety of educational and vocational community schemes, events and programmes for young people from the surrounding boroughs in collaboration with the businesses and institutions on-site.

Here East is a standout example of retrofit and sustainability in the built environment and continues to place social impact at the heart of the campus. In November 2020, it was awarded the National Social Impact Commercial Award at the inaugural RICS Social Impact Awards 2020, recognised for its minimal environmental impact in construction and use, its carbon reduction progress, and praised as a leader in sustainability in the built environment.

Here East was also celebrated for its positive social impact and commitment to fulfilling an economic and social need in the area through its mentorships, community and educational programmes – such as its School Career Insights Days, EAST Education Summer School, and People's Pavilion project in partnership with RIBA and Beyond the Box.

In January 2021, Here East launched a new scholarship programme to support local young people in east London through higher education courses at the world-class universities based on campus - Staffordshire University London and LMA institution for media, music and performing arts. Open to secondary school pupils currently residing in Hackney, Newham, Tower Hamlets and Waltham Forest, the programme will deliver on-the-ground impact to the east London community and supporting the potential of young people in the area through the world-class institutions and business on the campus.



*To celebrate 50 years of the internet Here East hosted local schools to explore the history of the internet and what the next 50 years will look like through a comic book workshop*



HERE EAST SCHOOL PROGRAMME

Delivering for East London is central to our founding mission. Our local community has often been underserved - particularly the four growth boroughs of Hackney, Newham, Tower Hamlets and Waltham Forest. We're committed to providing better education, better jobs, and better outcomes to the residents in our local boroughs. In partnership with Inspire, Here East has been working on programmes designed to introduce both primary and secondary school children and their teachers to the opportunity that lies in a career in the tech sector.

Here East is running three programmes:

- 1: Tech Star
- 2: Tech Masters
- 3: Teacher CPD Programme

[Find out more about jobs at Here East](#)



Here East school visit



Here East school visit

HERE EAST SCHOLARSHIP PROGRAMME

The Here East Scholarship Programme provides full undergraduate tuition and supporting loan supplements to local students from east London to study at world-class universities Staffordshire University London, Teesside University, and LMA based at Here East. The programme, launched in 2021, is open to prospective students currently residing in Hackney, Newham, Tower Hamlets and Waltham Forest, aiming to deliver on-the-ground impact to the east London community and supporting the potential of young people in the area through the institutions and business based at Here East.

[Find out more about the Here East Scholarship Programme](#)



WeDesign Scholars - 2022

DIVERSITY AND INCLUSION IN TECH

For more than a decade, Hackney has been a focal point for the rise of technology, digital and innovation industries, creating many new local job opportunities. Digital tech jobs offer a route to economic inclusion, social mobility, and equality as they typically provide better pay, progression, and transferable skills. However, Hackney's low-income and diverse communities face barriers to digital tech careers.

Here East collaborated with Hackney Council to launch Diversity in Tech: Breaking the Barriers report to understand residents' barriers to digital tech jobs, culminating in a report to highlight the issues and provide solutions.

[Find out more about the Diversity in Tech report](#)



Diversity in Tech conference - November 2022



CASE STUDY FIVE

PLEXAL

WE WORK ACROSS A NUMBER OF INITIATIVES DRIVING CHANGE IN LOCAL COMMUNITIES

*WE HAVE RECENTLY LAUNCHED AN APPRENTICESHIP CAMPAIGN WITH MULTIVERSE TO CREATE 50 APPRENTICES IN 2023*

PLEXAL

Plexal is the innovation centre at Here East that brings place and innovation together. The initial site has 68,000 sqft of best-in-class workspace combined with an innovation consulting practice that closes the gap between public sector and private sector, big companies and small companies.

From the outset, the needs of the community were paramount. The original vision for the centre emanated from the Olympic Legacy seeking to drive social regeneration, economic growth and technological progress through East London. Now Plexal is 6 years old, this vision holds true but has expanded in its reach. We work across a number of initiatives driving change in local communities including our Grown in Hackney programme that is working with founders from the local community to give them growth and impact in healthcare staffing, catering for vulnerable families, digital skills in schools and climate sustainable logistics.

Plexal also drives purpose from within the centre where they have launched their Community Respect Charter following a series of conversations around Black History Month and Pride about what Plexal could be doing to champion equality. Plexal's virtual events programme and social activities have included meetups for founders, women in business and LGBTQ+

members, as well as regular unconscious bias training for the community and employees.

Plexal's consulting practice has the opportunity to create impact nationally and internationally. The Cyber Runway programme, funded by Department of Science, Innovation & Technology, amongst other priorities, seeks to accelerate diversity and inclusion into technology businesses. In the first cohort, they worked with 166 companies, 52% of which had female founders, 45% came from a BAME background and 50% of them were from outside of London. They also have a series of programmes working with local authorities around the UK, namely Scarborough and Lancashire, seeking to drive local prosperity and economic growth. They have recently launched an apprenticeship campaign with Multiverse seeking to create 50 apprentices in 2023 for our member and alumni businesses.





# GIVING BACK TO OUR COMMUNITIES



A Snow Camp trip group shot

## DELANCEY'S OTHER PLATFORM BUSINESSES CSR WORK

Delancey has considerable experience of leading and contributing to effective strong, community based organisations that work in partnership with public sector bodies and private occupiers in order to provide cleaner, safer neighbourhoods.

### ALPHA PLUS

Alpha Plus - a schools business owned from 2007 to 2023 by clients of Delancey - provided facilities for local community groups outside normal school hours. Thanks to the enormous generosity and the hard work of pupils and parents in their schools, every year they were able to support a large number of charities, both local and international.

For example, during the 2019/20 academic year, Alpha Plus Group and its school and college communities raised over £600,000 for charitable causes, with environmental, educational and community concern at the heart of their fundraising. Some of the charities sponsored in 2021 included: Skylarks, The Royal Parks Foundation, St Mary's Hospital 'More Smiles Appeal', The Gold Standard Charitable Trust, Macmillan Cancer, Refettorio Felix at St Cuthbert's Church, Roald Dahl's Marvellous Children Charity, Ronald McDonald and Canine Partners. Internationally, their schools and colleges also engaged in significant CSR and charity work,

and supported charities such as Stand By Me, which establishes schools, homes and care centres for abandoned children in eleven countries, and Rwanda Aid which funds the building of new classrooms and facilitates a teacher mentor scheme in Rwanda. The group also proudly gave their support for a United World School in Cambodia.

Because of practical challenges to fund-raising during the pandemic, Alpha Plus school communities had to come up with new and ingenious ways to fundraise. Some launched sponsored walks, others virtual sport challenges, foodbanks and Christmas presents collections, mufti days and more. In April 2020, Alpha Plus Group also established a Hardship Fund to help families affected by the pandemic to pay Summer and Autumn term school fees. The Fund, which has now closed, made grants totalling over £1.5m to more than 300 families.



Wetherby Preparatory, West London, Alpha Plus Group



## DELANCEY & CHARITY IN THE COMMUNITY

We are constantly on the lookout for ways in which we can make much needed contributions to the community, and together with other colleagues in the property sector we support a number of charities and deserving causes in the world of art and culture.

Organisations that we have supported in the past include:

Apex 2100  
 Badu Sports One Community (COVID-19)  
 Bare Face - Fix us  
 Cancer Research UK  
 Canine Partners London Walking Dog Show  
 Classical Roadshow: Battle of Trafalgar  
 Coburg School  
 Coram  
 Crisis  
 Dad's House  
 Earls Court Community Trust  
 East End Community Foundation  
 East Village Local Foodbanks  
 EleFit  
 European Snowsports (in collaboration with Snowcamp)  
 GB Snowsport  
 Hammersmith and City Foodbank  
 Heritage of London  
 Horatio's Garden  
 Intrepidus Trust  
 Jackie Braithwaite Aid  
 Kensington Aldridge Academy (KAA) – Intrepid Trust  
 Maggie's Charity  
 Mind in Salford's Mindfulness Project  
 Mutual Aid Zone 4  
 National Portrait Gallery

Noah's Ark Children's Hospice  
 Quintessentially Foundation  
 Regent's Park Open Air Theatre  
 Row for Amy  
 RREF Recognition Evening  
 RREF Supporters' Evening  
 Snow Camp  
 Solidarity Sports  
 St Cuthbert's Centre  
 St John's Walworth School  
 Stop. Breathe. Think  
 Story of Christmas  
 The Childhood Trust  
 The Anne Frank Trust UK  
 The Finborough Theatre  
 The Globe  
 The Listening Place  
 The Lyric Theatre  
 The Prince's Trust  
 The Rhys Daniels Trust  
 The Smile Brigade  
 The Story of Christmas  
 UK Chess Challenge  
 YMCA Retirement Fund  
 YN Property Awards Dinner



*Delancey UK Schools' Chess Challenge*



DELANCEY AND ITS PLATFORM BUSINESSES ARE PROUD  
TO SUPPORT THE NATIONAL PORTRAIT GALLERY

*I AM DELIGHTED  
THAT DELANCEY  
WILL ENSURE  
THE CONTINUED  
SUPPORT OF  
THESE EXCITING  
PROJECTS*

#### SCHOOLS & LEARNING PROGRAMME

In February 2016, Delancey became the first ever sponsor for the National Portrait Gallery's Schools Programme. The first public portrait gallery in the world, the National Portrait Gallery was founded in 1856 and now has the largest collection of its type, housing some 200,000 portraits, from the 16th Century to the present day.

The Gallery's Schools Programme was a vibrant and important part of the gallery's learning offer, using its permanent Collection and temporary exhibitions as catalysts for activities which support the National Curriculum at primary and secondary schools across London. The three year programme worked across a range of subjects including history and citizenship as well as art and photography.

In 2017 Delancey extended its support of the Gallery and signed up to support the National Portrait Gallery's Hospitals Programme which works with London's four leading children's hospitals - Great Ormond Street Children's Hospital, Evelina London Children's Hospital, The Royal London Hospital and Newham University Hospital - to deliver a creative arts project to thousands of children and their families. More recently in 2020, Delancey renewed this sponsorship for a further four years and agreed

to expand its reach to cover west London, introducing the arts programme to Chelsea and Westminster Hospital.

The funding has enabled the Gallery to increase its commitment to providing access to the arts in London's children's hospitals. The only children's hospital arts programme of its kind in the world, it provides an ongoing, high quality, bespoke educational creative arts project year-round at no cost to hospitals.

The Gallery's programme includes around eighty creative workshops a year, working with photographers, writers and artists, and the scale and quality of the books ensure they can be used in many different clinical settings. The project enables young people and their families to access the Gallery's Collection and helps support health, wellbeing and happiness through participating in the books' activities and workshops.



*The National Portrait Gallery's Hospitals Programme*



**HOSPITALS PROGRAMME**

2022 marked 16 years of continual delivery to London hospitals, promoting health and wellbeing through creative arts programming. National Portrait Gallery believe in the power of art and creativity to provide comfort, enjoyment and distraction to young people in hospital and are committed to championing the Arts at a time when they are being marginalised nationally. They understand the potential for creative activity to support the physical, mental, and emotional recovery of children and young people in hospitals and pledge to contribute to this field through practice and research. The Gallery and its Collection play a social role for change through free, accessible programming. Using the portraits and inspirational personal stories of sitters in the Collection as a starting point, we can discover people, past and present who contribute to the rich identity and diversity of Britain.

The programme ensures their work is far-reaching, providing arts engagement for those who would otherwise not have access to the Gallery, whilst they are undergoing hospital treatment. The experienced team of artists deliver high quality participatory creative workshops for children, young people and their families. They plan in close collaboration with play teams, play therapists and hospital school teachers to ensure that the programming is accessible, relevant, engaging and inspirational. Over 20,500 young people and their families have participated in the programme to date.

**Dr Nicholas Cullinan, Director of the National Portrait Gallery London comments**

*"I am delighted that Delancey will ensure the continued support of these exciting projects that bring portraits from the National Portrait Gallery's Collection directly to London's schools and children's hospitals and will inspire their own creative responses to them."*

**Jamie Ritblat, Founder and Chairman at Delancey said**

*"We are thrilled to be able to continue our multi year support for the National Portrait Gallery's Hospitals Programme and be able to extend this to now include the Chelsea and Westminster Hospital until 2024, alongside the four other hospitals in the existing programme. With visiting times terribly limited during COVID-19, projects like this are vital in providing patients and their families with a chance to engage socially and creatively, whilst bringing some positivity to patients' lives and putting a smile on young faces."*

[Watch our video on Hospitals Programme](#)



*The National Portrait Gallery's Hospitals Programme*



*The National Portrait Gallery's Hospitals Programme*



DELANCEY IS PROUD TO BE HEADLINE SPONSOR OF THE UK SCHOOLS CHESS CHALLENGE

*FOCUSING ON HOW WE CAN REACH EVEN MORE CHILDREN TO INTRODUCE THEM TO THIS WONDERFUL GAME*



The Delancey UK Schools' Chess Challenge has run every year since 1996 and is now considered one of the world's largest junior chess competitions with over 1,000 schools and 40,000 children taking part every year. The ethos of the competition allows every child to enjoy playing and learning in the early stages, yet testing the mettle of the finest players towards the end.

Sponsored by Delancey, the UK Schools' Chess Challenge begins every Spring Term and runs through to September where the prestigious Terafinal takes place, with an exemption of 2020 with the Terafinal taking place in November due to COVID-19. In total there are four stages: the school's stage, the county Megafinals, the regional Gigafinals and the Terafinal. Every child is able to win prizes including certificates, badges, mascots, trophies and puzzle books.

In 2023 the Delancey UK Schools Chess Championship saw an increase in players as we head toward pre-covid levels. Children love the competition with the ultimate aim of qualifying for the finals at Blenheim Palace. Whilst attracting children of all levels and backgrounds this competition is the strongest junior chess competition in the UK with many winners going on to win international titles

Chess is a fantastic tool for children to develop their problem solving skills, creativity and imagination, as well as the ability to plan ahead and emotional resilience. It also teaches us that hard work and perseverance pay off and to have respect for the ideas of other people. For these reasons Delancey are delighted to support it through sponsorship of the UK Schools' Chess Challenge. The focus for 2021 is to help junior chess bounce back from the virus and in particular provide an opportunity for those children who perhaps didn't get the chance to learn chess in school this year to get free online lessons so that they can take part in the fun.

**Sarah Longson, CEO of the Delancey UK Schools' Chess Challenge comments**

*"The UK Schools' Chess Challenge was my first ever competition back in 1996 and it opened a lot of doors for me. For me to now be at the helm of this competition is a great honour. I am thoroughly grateful for Delancey's continued support which enables us to reach more schools and to put on world class events for children. We have exciting plans for the future and are focusing on how we can reach even more children to introduce them to this wonderful game."*

In addition to the annual Delancey UK Schools Chess Challenge, Delancey and East Village have also actively supported the charity Chess in Schools & the Community and in Spring 2013 sponsored chess boards and tutoring in schools and libraries throughout Newham. Delancey also held the first 'Chess Mania' afternoon in Elephant and Castle, bringing giant chess boards, free tutoring and chess games for the community to enjoy.



*Delancey UK Schools' Chess Challenge competition*



*Delancey UK Schools' Chess Challenge competition*



DELANCEY IS PROUD TO SUPPORT SNOW CAMP

*ENABLING SO MANY OF OUR YOUNG PEOPLE TO VOLUNTEER AND GAIN LIFE CHANGING EXPERIENCE*

Delancey is delighted to have worked very closely with charity partner Snow Camp for the last 8 years, whose work with inner city young people has had a huge impact since being established in Stockwell in 2003.

Snow Camp's programmes positively change the lives of disadvantaged inner city young people by combining snowsports and intensive youth work to engage, challenge and motivate young people – transforming their attitudes and behaviour, and enabling them to develop key life-skills, gain qualifications and find employment. Snow Camp support young people aged 13-21 with, on average, over 70% of young people coming from BAME backgrounds, and for Delancey, the partnership began as a complement to prior support for British Snowsport Athletes, as Principal Sponsor of GB Snowsport and Principal Sponsor for the Delancey British National Alpine Ski Championships until 2019. During the final four years as Principal Sponsor of the Championships, Delancey provided an opportunity for Snow Camp's apprentices to head out to work on the slopes in Tignes, France during the Delancey Championships and gain experience on the mountains, while learning from the support staff and crew involved.

Sponsorship of Snow Camp's programmes enables them to continue to partner and build new relationships across London and the UK and to work with young people from divided communities including Hackney, Newham, Southwark, Hammersmith & Fulham and Kensington & Chelsea – boroughs that Delancey operates in.

**Dan Charlish, Founder of Snow Camp**

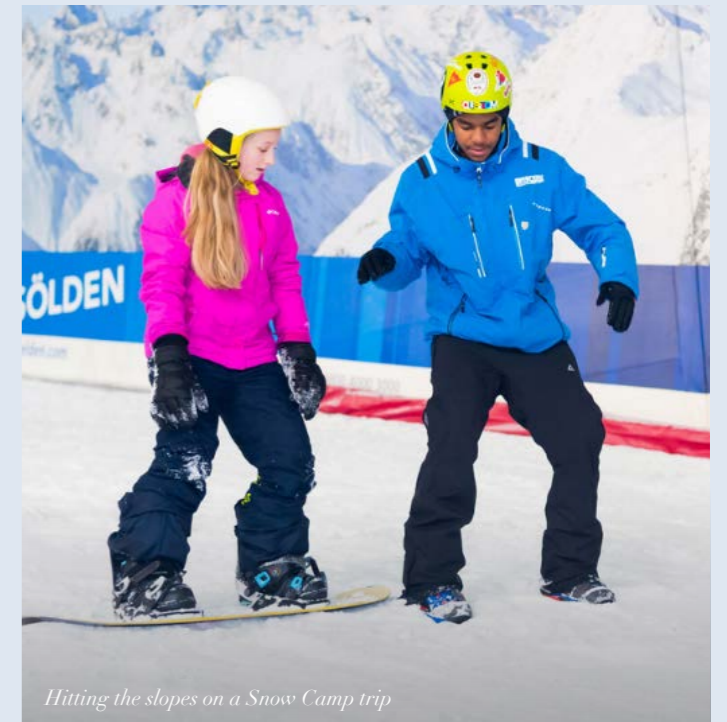
*"We are grateful for every company that wants to support the work we do at Snow Camp. Whether through entering teams at our fundraising events, supporting our annual drinks and anniversary balls, inviting us to speak at schools, linking us with youth projects in Delancey areas, enabling so many of our young people to volunteer and gain life changing experiences at the British Championships or inviting young people into the office to meet Jamie and the staff - each connection has deepened our friendship with staff across the company, and hopefully increased their trust in what we are trying to achieve at Snow Camp."*

*We are very grateful for all these relationships and for the belief Delancey has in our charity, and for all the wonderful support over the years. Thank you from everyone at Snow Camp."*

[Watch our video on Snow Camp](#)



*Indoor ski practice*



*Hitting the slopes on a Snow Camp trip*



STOP.BREATHE.THINK.

*MAKING SURE  
THAT THE SUPPORT  
YOUNG PEOPLE  
NEED IS AVAILABLE  
WHEN THEY NEED  
IT, FOR FREE.*

In 2023, Delancey and the Elephant and Castle Town Centre provided funds to mental health charity, Stop.Breathe.Think. (SBT) to launch a brand new pilot scheme to enable young people access to free online counselling sessions in the Elephant and Castle area.

With mental health services under strain from rising cases of anxiety and depression in young people, Stop.Breathe.Think. offers free counselling programmes for young people in need. The charity also runs 'wellbeing drop-in' sessions, which are short 30-minute calls with the fully trained on-call counsellor. Funds provided by Delancey help to ensure that young people, aged under 21, in the local area have access the vital support they need.

The intake counsellor matches young people to their specific counsellor for the next 6 weekly online sessions based on their needs. Throughout the journey, wellbeing sessions and 24/7 text support is available.

**Paul Goswell, CEO of Delancey**

*"Delancey has a long-standing relationship with the charity behind this critically needed youth mental health initiative. Over the last ten years we have supported a number of their youth programmes, but this one is particularly close to our hearts. We know that the pressures facing young people today are getting tougher and long waiting lists for mental health support often mean that those in the most vulnerable positions in our local communities are left without adequate access to the help they need. That's why we're working with Stop.Breathe.Think. to support young people in Elephant and Castle, an area we are invested in for the long-term as we help to redevelop its town centre, to make sure that the support they need is available when they need it, for free."*

**Community Director of Elephant and Castle Town Centre, Diana Barranco**

*"We are thrilled to be able to support the delivery of Stop.Breathe.Think's vital service in Elephant and Castle. Their mission to support those in need by providing counselling services to young people in the local area when they need it and at such short notice is incredible. Mental health support is crucial, and we are proud to be able to make a difference in the lives of these young people."*

**Founder of Stop.Breathe.Think, Dan Charlish said**

*"Since we launched Stop.Breathe.Think. during the pandemic, we have seen a continuing and growing demand for the service. The impact of covid has been huge for young people and their mental health and enabling them to get the counselling support they need, when they need it has been our goal since the outset. Support from Delancey and the Elephant and Castle Town Centre to enable us to launch our service in a targeted area of London is a fantastic step forward, and one we hope to replicate across the country. We are hugely grateful for the support."*

[Watch our video on Stop.Breathe.Think.](#)



*Stop. Breathe. Think. campaign poster*



*Image caption TBC*



DELANCEY AND ITS PLATFORM BUSINESSES  
ARE PROUD TO SUPPORT DADS HOUSE

*IF IT WAS NOT  
FOR YOU GUYS  
SUPPORTING US,  
SO MANY FAMILIES  
WOULD HAVE  
BEEN LOST*

Delancey has worked closely with Dads House since 2018, providing both donations and in-kind support to help the charity support struggling families and the wider community during COVID-19.

Dads House offers emotional support, combats loneliness and isolation by being available to chat on the phone or in-person at their drop-in centre and provides an array of help services such as breakfast clubs, law clinics, foodbanks and accommodation/housing.

At the beginning of 2019 Delancey provided the charity with a free unit, as well as food, in the Elephant and Castle shopping centre to run their foodbank and support those who needed it most. Following the success in the area, in April 2019 we replicated the foodbank services in Earls Court as we launched our platform business The Earls Court Development Company and provided a free premise at West Brompton Crossing, as well as food donations. To date, the charity has served over 7,350 families in Earls Court and has provided over 100,000 meals during the Covid-19 pandemic.

In summer 2023 Delancey signed up to fund Dads House Tuesday lunch clubs. These clubs were set up to ensure that those in need can have at least one hot meal a week, and tackle isolation and loneliness that many are experiencing at this time.

**Founder of Dads House, Billy McGranaghan**

*"I wanted to say a huge thank you to every single person who works for Delancey, for all the support we have been giving from day one. And also, every single person should be so proud that we have all been involved in Covid19 together, because if it was not for you guys supporting us, so many families would have been lost."*

**Founder & Chairman of Delancey, Jamie Ritblat**

*"We are incredibly proud to continue supporting Dads House, an exceptionally important and necessary charity, particularly in these difficult times. The help and relief that their services provided to thousands of families over the pandemic was instrumental. We look forward to volunteering at the lunch clubs, and watching this incredible charity continue to go from strength to strength."*

[Watch our video on Dads House](#)



*Organising the foodbank at Dads House in West Brompton Crossing*



In addition to the Delancey corporate brand supporting key charity and art initiatives on a London and UK-wide basis, we are also committed to making a positive contribution to the local communities in which individual assets are based.

**Get Living (East Village, Manchester and Elephant Central) sponsorship and support examples include:**

- Badu Sports
- 6 Day Cycling Manchester
- 6 Day Cycling London
- Madison Sports Group, for '6 Day Series' at Lee Valley Velo Park
- SportsAid – 10 E20 Champions
- Ping! London East Village Table Tennis Tables
- Great Britain Polar Plunge
- Headline sponsor, Queen Elizabeth Olympic Park, RLSB Blindfold run
- E20 Football Foundation
- GoodGym
- London Lions
- Special Olympics London team
- London Festival of Architecture installation 'Subtle Shifts' by Pidgin Perfect
- Nomad Cinema – East Village Outdoor Film Festival
- Theatre Royal Stratford East, Stratford East Singers
- Theatre Royal Stratford East, Autumn
- Mind in Salford
- National Portrait Gallery's Hospital Programme at Newham University Hospital Education
- Aleto Foundation
- East End Community Foundation
- East Village Parent, Baby and Toddler Group
- East End Community Foundation's 'Inspiring Communities Fund'
- Echo Programme, Autumn.

**Here East sponsorship and support examples in the London Borough of Hackney include:**

- Cushman and Wakefield Kayak Attack
- Climathon – 24 hour Hackathon
- Paralympic Legacy Inclusion team training day
- Invictus / Warrior Games
- RFU talent development academy
- London Tech Week Opening Ceremony
- Immersive Kind Collective
- Stour Space
- London Tech Advocate
- EAST Bank partners
- The Digital Agenda Impact Awards
- Open House Families
- LLDC Apprentice Awards
- Global Disability Innovation Summit
- Europas Conference & Awards
- Worktech by Unwired
- Lean Startup Summit London
- London Tech Week Launch Event
- Tech. – powered by Retail Week
- OFFF London
- Fun Palaces (Hub 67)
- Hackney Council and Wick Award local trust networking day



Wellness Festival at East Village

- 64 Bits: An Exhibition of the web's lost past at Here East
- Hackney Wkd
- UltraKids
- Chinese Sculpture Exhibition, Dialogue with the Emperors Qin's Warriors
- London Legacy Group Seminar
- Beyond Sport Summit
- Distinguished Gentleman's Ride
- Greenwich & Docklands Festival
- Centre for London
- Digital on the Park
- Summer Science Festival
- Hackney Wick superfast Wi-Fi scheme
- London Tech Advocates
- Creative Wick a creative regeneration agency
- The Next Big Thing, entrepreneur led charity
- Hackney Wick Winter Festival
- Repezent Radio Crowdfunding Campaign
- The Europas Startup Award, Internet of Things Award
- The Yard Theatre, Hackney Wick
- Year of Code
- Fish Island Labs (The Trampery)
- Hackney WickED Arts Festival
- The Legacy List London Means Business dinner
- National Portrait Gallery's Hospital Programme at Royal London Hospital
- East End Community Foundation, Christmas food bags
- East End Community Foundation, Elders Tea Dance
- EAST education Summer school
- Urban Land Institute
- Studio Wayne McGregor
- Polyphonic Playground
- Summer School Weekender
- Duke of Edinburgh Award, new bursary in London Borough of Hackney
- Hackney Community College Annual Students Awards
- East End Community Foundation.

**The Earls Court Development Company sponsorship and support examples in the London Borough of Kensington and Chelsea include:**

- 10th Fulham Scout Group
- Action on Disability
- Barons Court Project
- Blossom Young Minds
- Burnt Orange Theatre
- Community Education Forum
- Dads House
- Doorstep Library
- Earl's Court Community Trust
- Earls Court Youth Club
- EQUAL PEOPLE mencap
- Finborough Theatre
- FOR WOMEN CIC
- Minaret Community Centre
- Open Age
- Response Community Projects
- Solidarity Sports
- St Andrew's Church, Fulham Fields
- St Cuthbert's Centre
- London Limited
- The Skills Centre



Easter Eggstravaganza at Castle Square



# FOR MORE INFORMATION

---

To find out more about our CSR policy and work in the community please contact:

Delancey,  
2 Fitzroy Place  
8 Mortimer Street  
London W1T 3JJ

Tel: +44 (0)20 7448 1448

E: [info@delancey.com](mailto:info@delancey.com)

W: [www.delancey.com/csr.html](http://www.delancey.com/csr.html)

Image captions for front page, clockwise from top left:

YFC Vista Football Club / Delancey UK Schools' Chess Challenge /  
The National Portrait Gallery's Hospitals Programme / A Concert for Winter  
at The Globe Theatre / Drawing classes at the National Portrait Gallery.

Note: The representative sample of assets highlight where Delancey has been involved in various projects across a variety of real estate sectors and geographical coverage, as well as a number of development based projects. The selection of assets have not been based on performance criteria. It should not be assumed that any of the investments, transactions or holdings disclosed was or will prove to be profitable, or that any investment recommendations or decisions we make in the future will be profitable, or will equal the investment performance of those discussed herein. Any reference made to Delancey within this document, should be considered to be initiatives or activity undertaken by Delancey, either on its own behalf, or that of its Client Fund(s).

DELANCEY

NOT A TYPICAL PROPERTY INVESTOR